

HASIL OUTPUT SPSS

Reliability
Scale: ALL VARIABLES

Case Processing Summary

		N	%
Cases	Valid	100	100.0
	Excluded ^a	0	.0
	Total	100	100.0

a. Listwise deletion based on all variables in the procedure.

Reliability Statistics

Cronbach's Alpha	N of Items
.897	13

Item-Total Statistics

	Scale Mean if Item Deleted	Scale Variance if Item Deleted	Corrected Item-Total Correlation	Cronbach's Alpha if Item Deleted
p1	47.27	44.462	.654	.887
p2	47.47	43.242	.628	.888
p3	47.51	46.232	.421	.898
p4	47.51	44.838	.620	.888
p5	47.24	44.103	.645	.887
p6	47.36	43.505	.796	.881
p7	47.42	44.165	.662	.886
p8	47.56	43.946	.682	.885
p9	47.27	43.795	.709	.884
p10	47.80	46.101	.493	.894
p11	47.52	44.838	.581	.890
p12	47.91	45.881	.463	.895
p13	48.16	45.509	.472	.895

Scale Statistics

Mean	Variance	Std. Deviation	N of Items
51.50	51.970	7.209	13

Reliability**Scale: ALL VARIABLES****Case Processing Summary**

		N	%
Cases	Valid	100	100.0
	Excluded ^a	0	.0
	Total	100	100.0

a. Listwise deletion based on all variables in the procedure.

Reliability Statistics

Cronbach's Alpha	N of Items
.958	14

Item-Total Statistics

	Scale Mean if Item Deleted	Scale Variance if Item Deleted	Corrected Item-Total Correlation	Cronbach's Alpha if Item Deleted
s1	48.52	92.737	.782	.955
s2	48.57	93.338	.783	.954
s3	48.52	93.949	.750	.955
s4	48.46	94.877	.731	.956
s5	48.32	93.412	.749	.955
s6	48.20	95.980	.694	.956
s7	48.06	94.138	.741	.955
s8	48.24	93.316	.779	.955
s9	48.35	93.664	.719	.956
s10	48.44	92.815	.828	.953
s11	48.42	94.610	.765	.955
s12	48.20	93.939	.800	.954
s13	48.55	92.634	.826	.953
s14	48.45	93.301	.830	.953

Scale Statistics

Mean	Variance	Std. Deviation	N of Items
52.10	108.394	10.411	14

Reliability**Scale: ALL VARIABLES****Case Processing Summary**

		N	%
Cases	Valid	100	100.0
	Excluded ^a	0	.0
	Total	100	100.0

a. Listwise deletion based on all variables in the procedure.

Reliability Statistics

Cronbach's Alpha	N of Items
.915	9

Item-Total Statistics

	Scale Mean if Item Deleted	Scale Variance if Item Deleted	Corrected Item-Total Correlation	Cronbach's Alpha if Item Deleted
K1	31.81	36.519	.792	.900
K2	31.85	35.038	.847	.895
K3	31.93	35.601	.850	.895
K4	31.86	35.213	.866	.894
K5	31.82	35.462	.825	.897
K6	31.71	39.036	.684	.908
K7	31.56	39.865	.584	.913
K8	32.20	36.747	.690	.906
K9	32.86	39.334	.346	.937

Scale Statistics

Mean	Variance	Std. Deviation	N of Items
35.95	46.311	6.805	9

Correlations

		y_tingkat_kepatuhan	x1_tingkat_pengetahuan	x2_sistem_admin_perpajakan
y_tingkat_kepatuhan	Pearson Correlation	1	.615**	.635**
	Sig. (2-tailed)		.000	.000
	N	100	100	100
x1_tingkat_pengetahuan	Pearson Correlation	.615**	1	.570**
	Sig. (2-tailed)	.000		.000
	N	100	100	100
x2_sistem_admin_perpajakan	Pearson Correlation	.635**	.570**	1
	Sig. (2-tailed)	.000	.000	
	N	100	100	100

** . Correlation is significant at the 0.01 level (2-tailed).

Regression

Model	Variables Entered	Variables Removed	Method
1	x2_sistem_admin_perpajakan, x1_tingkat_pengetahuan ^b		Enter

a. Dependent Variable: y_tingkat_kepatuhan

b. All requested variables entered.

Model	R	R Square	Adjusted R Square	Std. Error of the Estimate
1	.706 ^a	.498	.487	4.872

a. Predictors: (Constant), x2_sistem_admin_perpajakan, x1_tingkat_pengetahuan

Model		Sum of Squares	df	Mean Square	F	Sig.
1	Regression	2282.485	2	1141.243	48.083	.000 ^b
	Residual	2302.265	97	23.735		
	Total	4584.750	99			

a. Dependent Variable: y_tingkat_kepatuhan

b. Predictors: (Constant), x2_sistem_admin_perpajakan, x1_tingkat_pengetahuan

Model		Unstandardized Coefficients		Standardized Coefficients	t	Sig.
		B	Std. Error	Beta		
1	(Constant)	3.396	3.575		.950	.345
	x1_tingkat_pengetahuan	.353	.083	.374	4.273	.000
	x2_sistem_admin_perpajakan	.276	.057	.422	4.814	.000

a. Dependent Variable: y_tingkat_kepatuhan

Regression

Variables Entered/Removed^a

Model	Variables Entered	Variables Removed	Method
1	x2_sistem_adm_perpajakan, x1_tingkat_pengetahuan ^b	.	Enter

- a. Dependent Variable: y_tingkat_kepatuhan
b. All requested variables entered.

Model Summary^b

Model	R	R Square	Adjusted R Square	Std. Error of the Estimate	Durbin-Watson
1	.706 ^a	.498	.487	4.872	1.721

- a. Predictors: (Constant), x2_sistem_adm_perpajakan, x1_tingkat_pengetahuan
b. Dependent Variable: y_tingkat_kepatuhan

ANOVA^a

Model		Sum of Squares	df	Mean Square	F	Sig.
1	Regression	2282.485	2	1141.243	48.083	.000 ^b
	Residual	2302.265	97	23.735		
	Total	4584.750	99			

- a. Dependent Variable: y_tingkat_kepatuhan
b. Predictors: (Constant), x2_sistem_adm_perpajakan, x1_tingkat_pengetahuan

Coefficients^a

Model		Unstandardized Coefficients		Standardized Coefficients	t
		B	Std. Error	Beta	
1	(Constant)	3.396	3.575		.950
	x1_tingkat_pengetahuan	.353	.083	.374	4.273
	x2_sistem_adm_perpajakan	.276	.057	.422	4.814

- a. Dependent Variable: y_tingkat_kepatuhan

Coefficients^a

Model		Sig.	Collinearity Statistics	
			Tolerance	VIF
1	(Constant)	.345		
	x1_tingkat_pengetahuan	.000	.675	1.482
	x2_sistem_adm_perpajakan	.000	.675	1.482

- a. Dependent Variable: y_tingkat_kepatuhan

Collinearity Diagnostics^a

Model	Dimension	Eigenvalue	Condition Index	Variance Proportions		
				(Constant)	x1_tingkat_pengetahuan	x2_sistem_adm_perpajakan
1	1	2.972	1.000	.00	.00	.00
	2	.020	12.310	.36	.02	.78
	3	.008	18.835	.64	.98	.22

- a. Dependent Variable: y_tingkat_kepatuhan

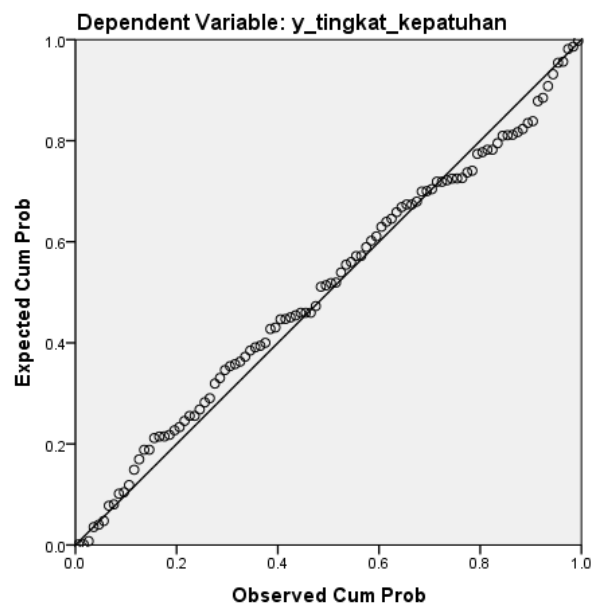
Residuals Statistics^a

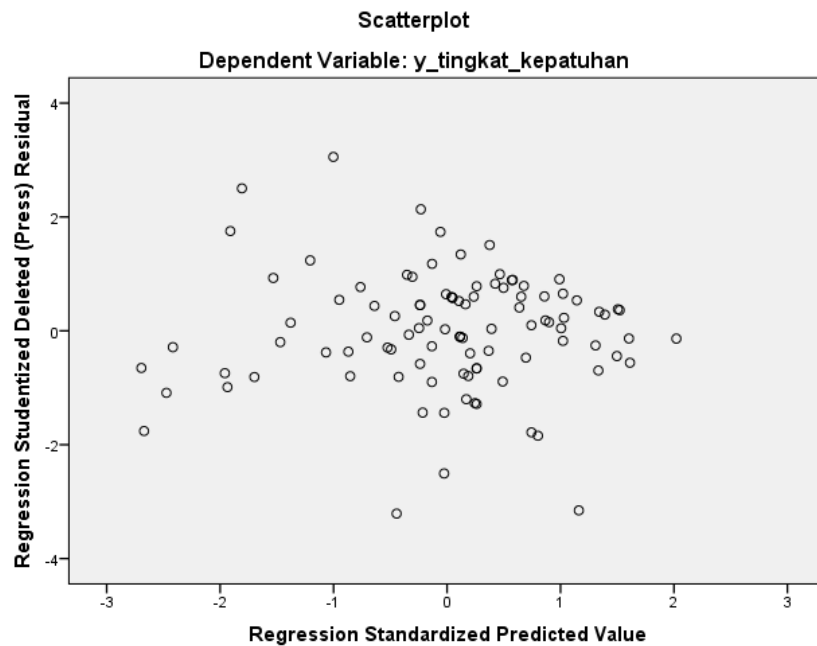
	Minimum	Maximum	Mean	Std. Deviation	N
Predicted Value	23.01	45.65	35.95	4.802	100
Std. Predicted Value	-2.694	2.021	.000	1.000	100
Standard Error of Predicted Value	.496	2.080	.785	.310	100
Adjusted Predicted Value	23.38	45.69	35.94	4.818	100
Residual	-14.817	13.862	.000	4.822	100
Std. Residual	-3.041	2.845	.000	.990	100
Stud. Residual	-3.066	2.931	.001	1.009	100
Deleted Residual	-15.061	14.706	.015	5.016	100
Stud. Deleted Residual	-3.210	3.054	.000	1.027	100
Mahal. Distance	.035	17.060	1.980	2.823	100
Cook's Distance	.000	.441	.014	.049	100
Centered Leverage Value	.000	.172	.020	.029	100

a. Dependent Variable: y_tingkat_kepatuhan

Charts

Normal P-P Plot of Regression Standardized Residual





NPar Tests

One-Sample Kolmogorov-Smirnov Test

		x1_tingkat_pen getahuan	x2_sistem_adm _perpajakan	y_tingkat_kepat uhan
N		100	100	100
Normal Parameters ^{a,b}	Mean	51.50	52.10	35.95
	Std. Deviation	7.209	10.411	6.805
	Absolute	.118	.130	.113
Most Extreme Differences	Positive	.054	.070	.092
	Negative	-.118	-.130	-.113
Kolmogorov-Smirnov Z		1.176	1.301	1.130
Asymp. Sig. (2-tailed)		.126	.068	.156

- a. Test distribution is Normal.
- b. Calculated from data.

NPar Tests

One-Sample Kolmogorov-Smirnov Test

		Unstandardized Residual
N		100
Normal Parameters ^{a,b}	Mean	0E-7
	Std. Deviation	4.82236448
	Absolute	.069
Most Extreme Differences	Positive	.069
	Negative	-.059
Kolmogorov-Smirnov Z		.690
Asymp. Sig. (2-tailed)		.728

- a. Test distribution is Normal.
- b. Calculated from data.

Descriptives

p1

		Frequency	Percent	Valid Percent	Cumulative Percent
Valid	STS	1	1.0	1.0	1.0
	TS	3	3.0	3.0	4.0
	RR	7	7.0	7.0	11.0
	S	50	50.0	50.0	61.0
	SS	39	39.0	39.0	100.0
	Total	100	100.0	100.0	

p2

		Frequency	Percent	Valid Percent	Cumulative Percent
Valid	STS	1	1.0	1.0	1.0
	TS	6	6.0	6.0	7.0
	RR	19	19.0	19.0	26.0
	S	37	37.0	37.0	63.0
	SS	37	37.0	37.0	100.0
	Total	100	100.0	100.0	

p3

		Frequency	Percent	Valid Percent	Cumulative Percent
Valid	STS	3	3.0	3.0	3.0
	TS	4	4.0	4.0	7.0
	RR	8	8.0	8.0	15.0
	S	61	61.0	61.0	76.0
	SS	24	24.0	24.0	100.0
	Total	100	100.0	100.0	

p4

		Frequency	Percent	Valid Percent	Cumulative Percent
Valid	STS	1	1.0	1.0	1.0
	TS	4	4.0	4.0	5.0
	RR	13	13.0	13.0	18.0
	S	59	59.0	59.0	77.0
	SS	23	23.0	23.0	100.0
	Total	100	100.0	100.0	

p5

		Frequency	Percent	Valid Percent	Cumulative Percent
Valid	STS	2	2.0	2.0	2.0
	TS	2	2.0	2.0	4.0
	RR	7	7.0	7.0	11.0
	S	46	46.0	46.0	57.0
	SS	43	43.0	43.0	100.0
	Total	100	100.0	100.0	

p6

		Frequency	Percent	Valid Percent	Cumulative Percent
Valid	STS	1	1.0	1.0	1.0
	TS	3	3.0	3.0	4.0
	RR	7	7.0	7.0	11.0
	S	59	59.0	59.0	70.0
	SS	30	30.0	30.0	100.0
	Total	100	100.0	100.0	

p7

		Frequency	Percent	Valid Percent	Cumulative Percent
Valid	STS	2	2.0	2.0	2.0
	TS	3	3.0	3.0	5.0
	RR	8	8.0	8.0	13.0
	S	59	59.0	59.0	72.0
	SS	28	28.0	28.0	100.0
	Total	100	100.0	100.0	

p8

		Frequency	Percent	Valid Percent	Cumulative Percent
Valid	STS	1	1.0	1.0	1.0
	TS	4	4.0	4.0	5.0
	RR	18	18.0	18.0	23.0
	S	54	54.0	54.0	77.0
	SS	23	23.0	23.0	100.0
	Total	100	100.0	100.0	

p9

		Frequency	Percent	Valid Percent	Cumulative Percent
Valid	TS	4	4.0	4.0	4.0
	RR	11	11.0	11.0	15.0
	S	43	43.0	43.0	58.0
	SS	42	42.0	42.0	100.0
	Total	100	100.0	100.0	

p10

		Frequency	Percent	Valid Percent	Cumulative Percent
Valid	TS	3	3.0	3.0	3.0
	RR	41	41.0	41.0	44.0
	S	39	39.0	39.0	83.0
	SS	17	17.0	17.0	100.0
	Total	100	100.0	100.0	

p11

		Frequency	Percent	Valid Percent	Cumulative Percent
Valid	TS	4	4.0	4.0	4.0
	RR	23	23.0	23.0	27.0
	S	44	44.0	44.0	71.0
	SS	29	29.0	29.0	100.0
	Total	100	100.0	100.0	

p12

		Frequency	Percent	Valid Percent	Cumulative Percent
Valid	STS	2	2.0	2.0	2.0
	TS	5	5.0	5.0	7.0
	RR	38	38.0	38.0	45.0
	S	42	42.0	42.0	87.0
	SS	13	13.0	13.0	100.0
	Total	100	100.0	100.0	

p13

	Frequency	Percent	Valid Percent	Cumulative Percent
Valid STS	4	4.0	4.0	4.0
TS	5	5.0	5.0	9.0
RR	55	55.0	55.0	64.0
S	25	25.0	25.0	89.0
SS	11	11.0	11.0	100.0
Total	100	100.0	100.0	

s1

	Frequency	Percent	Valid Percent	Cumulative Percent
Valid STS	4	4.0	4.0	4.0
TS	8	8.0	8.0	12.0
RR	29	29.0	29.0	41.0
S	44	44.0	44.0	85.0
SS	15	15.0	15.0	100.0
Total	100	100.0	100.0	

s2

	Frequency	Percent	Valid Percent	Cumulative Percent
Valid STS	4	4.0	4.0	4.0
TS	8	8.0	8.0	12.0
RR	30	30.0	30.0	42.0
S	47	47.0	47.0	89.0
SS	11	11.0	11.0	100.0
Total	100	100.0	100.0	

s3

	Frequency	Percent	Valid Percent	Cumulative Percent
Valid STS	4	4.0	4.0	4.0
TS	6	6.0	6.0	10.0
RR	31	31.0	31.0	41.0
S	46	46.0	46.0	87.0
SS	13	13.0	13.0	100.0
Total	100	100.0	100.0	

s4

	Frequency	Percent	Valid Percent	Cumulative Percent
Valid STS	2	2.0	2.0	2.0
TS	8	8.0	8.0	10.0
RR	28	28.0	28.0	38.0
S	48	48.0	48.0	86.0
SS	14	14.0	14.0	100.0
Total	100	100.0	100.0	

s5

	Frequency	Percent	Valid Percent	Cumulative Percent
Valid STS	2	2.0	2.0	2.0
TS	9	9.0	9.0	11.0
RR	21	21.0	21.0	32.0
S	45	45.0	45.0	77.0
SS	23	23.0	23.0	100.0
Total	100	100.0	100.0	

s6

	Frequency	Percent	Valid Percent	Cumulative Percent
Valid 1	1	1.0	1.0	1.0
2	6	6.0	6.0	7.0
3	18	18.0	18.0	25.0
4	52	52.0	52.0	77.0
5	23	23.0	23.0	100.0
Total	100	100.0	100.0	

s7

	Frequency	Percent	Valid Percent	Cumulative Percent
Valid 1	2	2.0	2.0	2.0
2	5	5.0	5.0	7.0
3	14	14.0	14.0	21.0
4	45	45.0	45.0	66.0
5	34	34.0	34.0	100.0
Total	100	100.0	100.0	

s8

	Frequency	Percent	Valid Percent	Cumulative Percent
Valid 1	3	3.0	3.0	3.0
2	5	5.0	5.0	8.0
3	19	19.0	19.0	27.0
4	49	49.0	49.0	76.0
5	24	24.0	24.0	100.0
Total	100	100.0	100.0	

s9

	Frequency	Percent	Valid Percent	Cumulative Percent
Valid 1	2	2.0	2.0	2.0
2	10	10.0	10.0	12.0
3	22	22.0	22.0	34.0
4	43	43.0	43.0	77.0
5	23	23.0	23.0	100.0
Total	100	100.0	100.0	

s10

	Frequency	Percent	Valid Percent	Cumulative Percent
Valid 1	3	3.0	3.0	3.0
2	6	6.0	6.0	9.0
3	29	29.0	29.0	38.0
4	46	46.0	46.0	84.0
5	16	16.0	16.0	100.0
Total	100	100.0	100.0	

s11

	Frequency	Percent	Valid Percent	Cumulative Percent
Valid 1	1	1.0	1.0	1.0
2	9	9.0	9.0	10.0
3	26	26.0	26.0	36.0
4	49	49.0	49.0	85.0
5	15	15.0	15.0	100.0
Total	100	100.0	100.0	

s12

	Frequency	Percent	Valid Percent	Cumulative Percent
Valid 1	1	1.0	1.0	1.0
2	7	7.0	7.0	8.0
3	17	17.0	17.0	25.0
4	51	51.0	51.0	76.0
5	24	24.0	24.0	100.0
Total	100	100.0	100.0	

s13

	Frequency	Percent	Valid Percent	Cumulative Percent
Valid 1	3	3.0	3.0	3.0
2	8	8.0	8.0	11.0
3	34	34.0	34.0	45.0
4	41	41.0	41.0	86.0
5	14	14.0	14.0	100.0
Total	100	100.0	100.0	

s14

	Frequency	Percent	Valid Percent	Cumulative Percent
Valid 1	3	3.0	3.0	3.0
2	6	6.0	6.0	9.0
3	27	27.0	27.0	36.0
4	51	51.0	51.0	87.0
5	13	13.0	13.0	100.0
Total	100	100.0	100.0	

K1

	Frequency	Percent	Valid Percent	Cumulative Percent
Valid 1	1	1.0	1.0	1.0
2	7	7.0	7.0	8.0
3	10	10.0	10.0	18.0
4	41	41.0	41.0	59.0
5	41	41.0	41.0	100.0
Total	100	100.0	100.0	

K2

	Frequency	Percent	Valid Percent	Cumulative Percent
Valid 1	2	2.0	2.0	2.0
2	7	7.0	7.0	9.0
3	14	14.0	14.0	23.0
4	33	33.0	33.0	56.0
5	44	44.0	44.0	100.0
Total	100	100.0	100.0	

K3

	Frequency	Percent	Valid Percent	Cumulative Percent
Valid 1	2	2.0	2.0	2.0
2	5	5.0	5.0	7.0
3	18	18.0	18.0	25.0
4	39	39.0	39.0	64.0
5	36	36.0	36.0	100.0
Total	100	100.0	100.0	

K4

	Frequency	Percent	Valid Percent	Cumulative Percent
Valid 1	2	2.0	2.0	2.0
2	7	7.0	7.0	9.0
3	11	11.0	11.0	20.0
4	40	40.0	40.0	60.0
5	40	40.0	40.0	100.0
Total	100	100.0	100.0	

K5

	Frequency	Percent	Valid Percent	Cumulative Percent
Valid 1	1	1.0	1.0	1.0
2	7	7.0	7.0	8.0
3	17	17.0	17.0	25.0
4	28	28.0	28.0	53.0
5	47	47.0	47.0	100.0
Total	100	100.0	100.0	

K6

	Frequency	Percent	Valid Percent	Cumulative Percent
Valid 2	5	5.0	5.0	5.0
3	6	6.0	6.0	11.0
4	49	49.0	49.0	60.0
5	40	40.0	40.0	100.0
Total	100	100.0	100.0	

K7

	Frequency	Percent	Valid Percent	Cumulative Percent
Valid 1	1	1.0	1.0	1.0
2	1	1.0	1.0	2.0
3	10	10.0	10.0	12.0
4	34	34.0	34.0	46.0
5	54	54.0	54.0	100.0
Total	100	100.0	100.0	

K8

	Frequency	Percent	Valid Percent	Cumulative Percent
Valid 1	5	5.0	5.0	5.0
2	4	4.0	4.0	9.0
3	25	25.0	25.0	34.0
4	43	43.0	43.0	77.0
5	23	23.0	23.0	100.0
Total	100	100.0	100.0	

K9

	Frequency	Percent	Valid Percent	Cumulative Percent
Valid 1	14	14.0	14.0	14.0
2	16	16.0	16.0	30.0
3	32	32.0	32.0	62.0
4	23	23.0	23.0	85.0
5	15	15.0	15.0	100.0
Total	100	100.0	100.0	

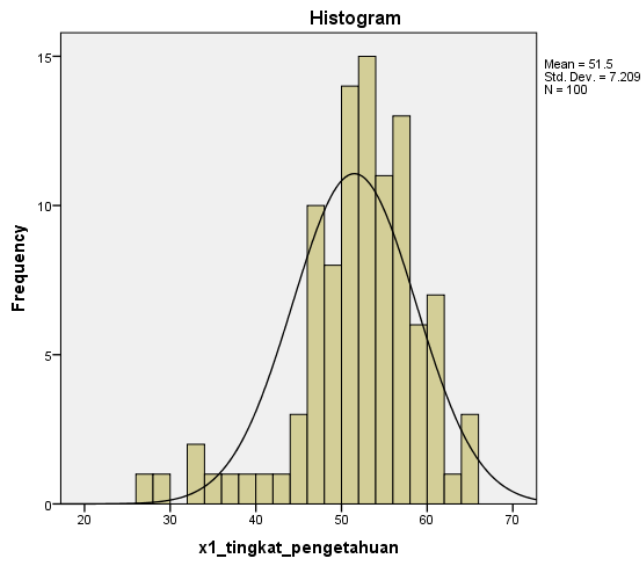
Frequencies**Statistics**

x1_tingkat_pengetahuan

N	Valid	100
	Missing	0
Mean		51.50
Std. Error of Mean		.721
Median		52.00
Mode		52
Std. Deviation		7.209
Variance		51.970
Range		38
Minimum		27
Maximum		65
Sum		5150

x1_tingkat_pengetahuan

	Frequency	Percent	Valid Percent	Cumulative Percent
27	1	1.0	1.0	1.0
29	1	1.0	1.0	2.0
32	2	2.0	2.0	4.0
34	1	1.0	1.0	5.0
37	1	1.0	1.0	6.0
39	1	1.0	1.0	7.0
41	1	1.0	1.0	8.0
42	1	1.0	1.0	9.0
44	1	1.0	1.0	10.0
45	2	2.0	2.0	12.0
46	8	8.0	8.0	20.0
47	2	2.0	2.0	22.0
48	3	3.0	3.0	25.0
49	5	5.0	5.0	30.0
50	9	9.0	9.0	39.0
51	5	5.0	5.0	44.0
52	10	10.0	10.0	54.0
53	5	5.0	5.0	59.0
54	6	6.0	6.0	65.0
55	5	5.0	5.0	70.0
56	6	6.0	6.0	76.0
57	7	7.0	7.0	83.0
58	4	4.0	4.0	87.0
59	2	2.0	2.0	89.0
60	4	4.0	4.0	93.0
61	3	3.0	3.0	96.0
62	1	1.0	1.0	97.0
64	2	2.0	2.0	99.0
65	1	1.0	1.0	100.0
Total	100	100.0	100.0	



Frequencies

Statistics

x2_sistem_adm_perpajakan

N	Valid	100
	Missing	0
Mean		52.10
Std. Error of Mean		1.041
Median		54.00
Mode		56
Std. Deviation		10.411
Variance		108.394
Range		48
Minimum		22
Maximum		70
Sum		5210

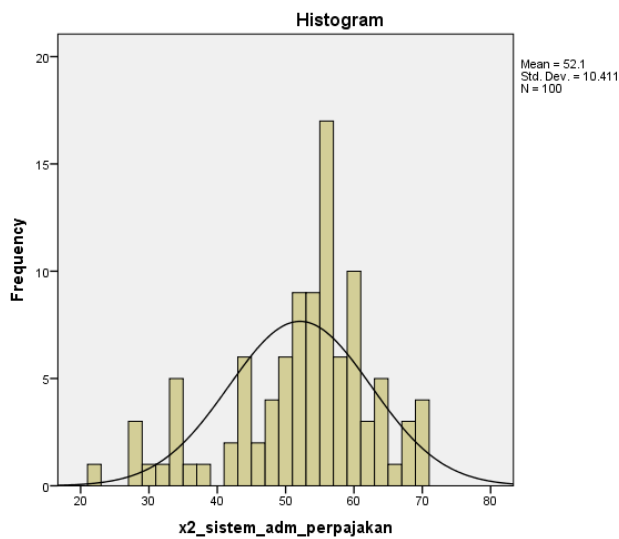
x2_sistem_adm_perpajakan

	Frequency	Percent	Valid Percent	Cumulative Percent
Valid 22	1	1.0	1.0	1.0
27	1	1.0	1.0	2.0
28	2	2.0	2.0	4.0
30	1	1.0	1.0	5.0
31	1	1.0	1.0	6.0
33	1	1.0	1.0	7.0
34	4	4.0	4.0	11.0
35	1	1.0	1.0	12.0
38	1	1.0	1.0	13.0
41	1	1.0	1.0	14.0
42	1	1.0	1.0	15.0
43	2	2.0	2.0	17.0
44	4	4.0	4.0	21.0
45	1	1.0	1.0	22.0
46	1	1.0	1.0	23.0
47	1	1.0	1.0	24.0
48	3	3.0	3.0	27.0
49	2	2.0	2.0	29.0

50	4	4.0	4.0	33.0
51	6	6.0	6.0	39.0
52	3	3.0	3.0	42.0
53	7	7.0	7.0	49.0
54	2	2.0	2.0	51.0
55	8	8.0	8.0	59.0
56	9	9.0	9.0	68.0
57	3	3.0	3.0	71.0
58	3	3.0	3.0	74.0
59	5	5.0	5.0	79.0
60	5	5.0	5.0	84.0
61	1	1.0	1.0	85.0
62	2	2.0	2.0	87.0
63	1	1.0	1.0	88.0
64	4	4.0	4.0	92.0
66	1	1.0	1.0	93.0
67	1	1.0	1.0	94.0

x2_sistem_adm_perpajakan

	Frequency	Percent	Valid Percent	Cumulative Percent
Valid 68	2	2.0	2.0	96.0
69	1	1.0	1.0	97.0
70	3	3.0	3.0	100.0
Total	100	100.0	100.0	



Frequencies

Statistics		
y_tingkat_kepatuhan		
N	Valid	100
	Missing	0
Mean		35.95
Std. Error of Mean		.681
Median		36.00
Mode		36 ^a
Std. Deviation		6.805
Variance		46.311
Range		30
Minimum		15
Maximum		45
Sum		3595

a. Multiple modes exist. The smallest value is shown

y_tingkat_kepatuhan				
	Frequency	Percent	Valid Percent	Cumulative Percent
	15	1	1.0	1.0
	19	2	2.0	3.0
	20	1	1.0	4.0
	22	1	1.0	5.0
	23	2	2.0	7.0
	24	2	2.0	9.0
	27	1	1.0	10.0
	28	3	3.0	13.0
	29	2	2.0	15.0
	30	3	3.0	18.0
	31	6	6.0	24.0
	32	4	4.0	28.0
Valid	33	3	3.0	31.0
	34	6	6.0	37.0
	35	5	5.0	42.0
	36	9	9.0	51.0
	37	3	3.0	54.0
	38	2	2.0	56.0
	39	9	9.0	65.0
	40	3	3.0	68.0
	41	9	9.0	77.0
	42	4	4.0	81.0
	43	7	7.0	88.0
	44	5	5.0	93.0
	45	7	7.0	100.0
Total	100	100.0	100.0	

